



**MedShare**<sup>®</sup>

Improving the quality of life of people and our planet

---

**2020 Annual Report**  
Serving the Global Community



**On the Cover:**

Members of the Pediatric Critical Care team at Montefiore Medical Center in the Bronx send a thank you to MedShare for providing face masks and other essential medical supplies during the COVID-19 pandemic.

4.8  
million patients  
served



## The MedShare Mission:

*MedShare is dedicated to improving the quality of life of people, communities and our planet by sourcing and directly delivering surplus medical supplies and equipment to communities in need around the world.*

---

### Our Commitment

MedShare is committed to providing assistance to all healthcare organizations and medical professionals regardless of religion, political affiliation, or race. MedShare is steadfast in our obligation to provide high-quality medical supplies and equipment to hospitals and clinics in need.

### Our Community

MedShare relies solely on the generosity of individuals, foundations, corporations, and organizations to carry out our mission.

# Dear Friends,

This year was unlike any other we've seen in our history. MedShare faced both challenges and opportunities in the midst of the COVID-19 pandemic. We were heartened by the way our supporters, partners, and communities came together to strengthen our efforts to provide relief to health care professionals working to treat patients and contain the COVID-19 pandemic in the U.S. and around the world.

Through our response to COVID-19 as well as our core programmatic efforts, we improved the lives of 4.8 million people in 61 countries, including the U.S., providing \$17 million in aid in our fiscal year 2020. The number of people we positively impacted this year is three times the number we achieved in the previous year.

We delivered more than 12,000 Clean Birthing Kits, surpassing 33,000 CBKs delivered to date, through our Maternal and Child Health program. Additionally, we continued to make progress with our Safe Birth Initiative (SBI), which represents a collaboration with The Coca-Cola West Africa Business Unit and the Nigeria Minister of Health. We've now equipped 8 of 15 public hospitals with high-quality biomedical equipment and supplies, as we partner to reduce maternal and neonatal mortality rates, ensuring that more mothers and babies make it home alive.

MedShare's Biomedical Equipment Training and Repair service plays an essential role in helping to improve quality of care over the long term in the communities we serve. In 2020, we conducted three trainings reaching 550 engineers, technicians, and end-users in the Dominican Republic, Cote D'Ivoire, and Nigeria.

Our disaster relief efforts reached more than 37,000 people in the Bahamas and Venezuela to address two very different types of disasters – one a natural disaster and one a result of political and economic turmoil.

Much of our focus over the final six months of the year was on the COVID-19 pandemic.

At the height of the outbreak, we partnered with hospitals, safety-net clinics, and other nonprofit organizations to provide them with the personal protective equipment (PPE) they needed to protect health care professionals fighting COVID-19 on the front lines and continue to provide health care for underserved communities. In total, we distributed 5.6 million units of PPE to more than 240 health care organizations around the world, including over 220 in the U.S.

We are thankful for the tremendous support of the many donors, partners, supporters, volunteers, and staff who have helped us to advance our mission and impact so many lives in these unprecedented times. We invite you to read more about how we're serving our global community as we work to improve the quality of life of people and our planet.

Sincerely,



Charles Redding  
CEO & President,  
MedShare



Keith Winn  
Chair,  
MedShare Board of Trustees



# 2020 Global Impact



**372**  
medical mission  
teams supported

**43k**  
health care  
professionals  
equipped

**158**  
safety-net  
clinics supported



**61**  
countries  
served

**\$17M**  
in aid  
donated

**16k+**  
volunteers

# Maternal & Child Health Program

## Bringing Mother and Baby Home Alive

The Safe Birth Initiative (SBI) is a partnership between MedShare, The Coca-Cola West Africa Business Unit, and the Nigeria Minister of Health to improve maternal and neonatal health care in Nigeria. Through the SBI, Federal Medical Center in Ebute Metta, Nigeria received a Phillips ultrasound machine. This is the only ultrasound machine available for pediatric cardiac diagnostics in the hospital.

Soon after the equipment was installed, Dr. Nnenna Kalu used the ultrasound to perform a scan on an infant suffering from cardiovascular complications. In the past, infants experiencing cardiac complications had to be transported to another hospital, increasing the risk of further complications and even death. Thanks to the donation of this ultrasound, Dr. Kalu and other doctors at this hospital are now able to diagnose and treat pediatric patients with cardiovascular issues quickly, helping to ensure that more mothers and their babies are able to make it home alive.



“I want to thank Wesley Medical Center for their donation of a Clean Birthing Kit. The Clean Birthing Kit was of great benefit, since the Public Medical Centers and Maternity Centers currently do not have the supplies and implements necessary for delivery or for a cesarean surgery. In my case, I delivered in “La Caruciena” Maternity Center, and everything in my clean birthing kit was of great use. If I had not received it, I would have had to buy everything on my own.”

- Dayana Torres



## Caring for At-Risk Women and Children in Venezuela

Venezuela is in the midst of a health crisis fueled by the ongoing economic and political turmoil rocking the country. As the country faces widespread shortages of medicines, supplies, and equipment, community health organizations are playing a vital role in delivering health care for their communities. One of these organizations is Wesley Medical Center located in Cabudare, Venezuela.

Wesley serves hundreds of families who cannot afford access to quality health care, and they place particular focus on at-risk young women and children. Venezuela saw a 63% increase in infant mortality from 2012-2016, and more than 20% of pregnant women in low-income communities suffer from acute malnutrition. In partnership with Venezuela Now and Wesley Medical Center, MedShare provided Clean Birthing Kits, infant care products, PPE, and other primary care supplies to support their efforts to deliver much-needed health care in their community.

**32**  
countries  
served

**\$660k**  
value of donated  
supplies

**62.5k**  
patients served

# Primary Care Program

## Restoring Madeline's Independence

Madeline lives in a rural community in El Salvador. She was born with a congenital disease known as brittle bone disease, which causes her bones to be extremely fragile and fracture easily. In her first 14 years, Madeline suffered multiple fractures and endured numerous surgeries on her legs and feet to give her the ability to walk, which she was finally able to do at age 12.

After gaining the ability to walk with crutches, Madeline was able to become more independent and attend school. However, the constant wear and tear on her crutches caused them to break, and without access to new crutches, her mobility was once again severely restricted. In underserved communities, mobility equipment for children is often in short supply, leading to long wait times for children to receive the equipment they desperately need.

Funter, a nonprofit organization in El Salvador that provides comprehensive rehabilitation services for the community, stepped in to provide Madeline with a new pair of crutches, thanks to a shipment of crutches and other mobility equipment from MedShare that was funded by Food for the Poor. Through this partnership, Madeline was once again able to return to school and participate in activities with her friends.

**"I want to be a doctor  
to be able to help others.  
I'd also like to travel all over  
the world. I will not allow my  
disabilities to stop me."  
- Madeline Azucena Avalos**





## Medical Mission Teams



### Partnering to Deliver Critical Care in Honduras

The 403rd Aeromedical Staging Squadron undertook a medical mission and training exercise to Tegucigalpa, Honduras where a 30-member team partnered with the medical staff at the largest public hospital in Honduras to provide life-saving care to the community. Over the course of the two-week trip, the team integrated their capabilities with Hospital Escuela to provide critical care and at the same time, train to ensure deployment readiness for future needs.

One of the patients they treated was an 18-year old boy who was attending a local Christmas village light show with his family when a nearby peaceful protest unexpectedly turned violent. When someone threw a hand-made bomb into the crowd, the young boy was critically injured. The 403rd team worked side-by-side with the Honduran medical staff in a shared learning environment to save the boy's eyesight and his life. He is now able to walk again and is working towards a full recovery.

Through this medical mission trip, this group of Air Force medical reservists was able to positively impact the lives of the patients in the local community, share knowledge and skills with the local medical team, and gain invaluable training for future deployments.

**61**  
countries  
served

**\$13M**  
in aid  
donated

**1M**  
patients  
served

## Safety-Net Clinics

**“We love the MedShare mission and are grateful to be in this partnership,”**

- Annie Stickel, LavaMae



## LavaMae

Recognizing that the homeless population often feels invisible and dehumanized, the founder of LavaMae sought to serve these members of the community with an extraordinary level of care. Based in Alameda, California, LavaMae provides mobile hygiene services for people living on the streets of San Francisco. By bringing hygiene and sanitation services directly to the homeless community and treating them with respect and dignity, LavaMae is committed to helping unlock opportunity and rekindle optimism among the homeless population.

MedShare provides PPE and first-aid supplies as well as walkers, wheelchairs, and other medical devices to LavaMae. By partnering with MedShare to secure basic medical supplies, LavaMae is able to make their resources stretch farther to provide high-quality services to as many people as possible in their community. As the need extends well beyond San Francisco, LavaMae also actively partners with other nonprofits, city agencies, and individuals to create sustainable community-based solutions that expand access to mobile hygiene and other street-based services in cities across the U.S. and around the world.

# Partner Spotlight: Henry Schein and Owens & Minor

## Amplifying our Impact Through Partnerships

When disasters strike, the need for relief is immediate as first responders address urgent needs and begin the process of recovery. Thankfully, our long-standing partners, Henry Schein and Owens & Minor, work closely with us to support our disaster preparedness planning by pre-positioning product so that we have essential medical supplies on hand and are able to provide a rapid response in the aftermath of disasters.

Henry Schein and Owens & Minor have played a role in just about every disaster relief effort that MedShare has led over the last decade. Through regular donations of personal protective equipment and other essential medical supplies, they ensure that we have the supplies necessary to respond to disasters on hand and ready to ship out at a moment's notice.

While disaster preparedness is an important aspect of our partnership, both of these partners' support extends to all of our programs and includes participation on our board and councils as well as volunteer engagements. Their products are considered to be core supplies in health care and are often the products that health care organizations need the most to be able to deliver basic, quality care to the communities they serve.



**“At Owens & Minor we are focused on empowering our customers to advance healthcare... We are proud of our partnership with MedShare”**

- Will Wiley, Vice President of Global Supply Chain at Owens & Minor



**“We are grateful for our relationship with MedShare and pleased to be aligned with an organization that has invaluable expertise in managing, sourcing, and delivering medical supplies and equipment to communities around the world.”**

- Jennifer Kim Field, Vice President of Corporate Social Responsibility at Henry Schein, Inc

# Disaster Relief Program

## Providing Global COVID-19 Relief

When the World Health Organization declared COVID-19 a global health emergency, MedShare responded immediately by partnering with The UPS Foundation to send a shipment of procedural masks to hospitals treating COVID-19 patients in Wuhan, the initial epicenter of the virus. Soon after, thanks to the help of our partners, including The Coca-Cola Foundation, The UPS Foundation, and Herbalife Nutrition Foundation, we sent two additional shipments of masks and isolation gowns to Wuhan and Shanghai.

As the pandemic arrived in the U.S., we quickly pivoted to focus our efforts on supporting hospitals, community clinics, and other nonprofit organizations in Georgia, California, and the New York metropolitan area with PPE and other essential supplies and equipment. Many organizations struggled to procure the supplies that they needed as global demand spiked. MedShare was able to utilize pre-positioned PPE to address the most immediate needs so that health care professionals had the protection they needed to safely treat patients. In total, we donated 5.6 million units of PPE to more than 240 health care organizations in the U.S. and around the world to support the fight against COVID-19.





## Bethesda Community Clinic

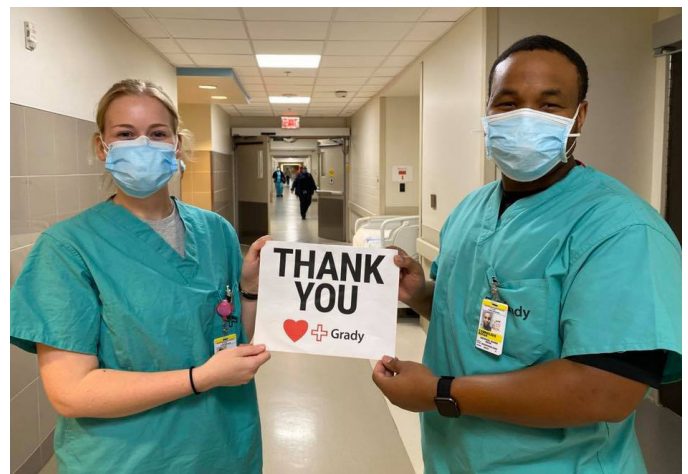
Bethesda Community Clinic is a nonprofit in Canton, GA that provides low-cost quality health care to uninsured and under-insured residents in Cherokee County. As a small organization, they struggled to find the PPE that they needed to safely care for patients at the same time that they were experiencing an increase in demand for their services. MedShare's support allowed them to remain open and to continue to provide care for those in need in their community without compromising the safety of their patients, staff, and volunteers.

**"Thank you for caring for the "little guys" as well as the larger clinics and facilities you serve. We are truly blessed to partner with you!"**

- Melissa Belfield, Executive Director, Bethesda Community Clinic

## Grady

As one of the nation's leading trauma centers, Grady is committed to caring for the underserved residents of Fulton and DeKalb counties as well as treating patients from across Georgia. In the early days of the pandemic, Grady experienced a surge of critical COVID-19 cases. In response, MedShare partnered with Grady to provide ventilators and PPE needed to care for the large number of patients requiring urgent attention. MedShare's donation of ventilators not only helped Grady through that early surge of the pandemic but has also continued to be used to save the lives of trauma patients.



**"MedShare was an invaluable resource when Grady needed it the most... [their] partnership and donation of this vital equipment is truly saving lives and helping to keep Team Grady's healthcare heroes safe."**

- Joselyn Butler Baker, President, Grady Health Foundation

**11**  
countries  
served

**\$3M**  
in donated  
supplies

**3.7M**  
patients  
served

## Montefiore Medical Center and BronxCare

When New York City was experiencing extremely high COVID-19 case counts, we were able to provide urgently-needed masks and other PPE to two of the hardest hit hospitals in the Bronx: Montefiore and BronxCare. Both of these organizations were experiencing shortages of PPE as they were overwhelmed with patients requiring critical care. This donation helped to provide protection for the medical professionals who were treating COVID-19 patients on the front lines.



**“We are so grateful to you for donating these masks to us.”**

- Julia Isenberg, Montefiore Medical Center



## Seton Medical Center

As COVID-19 cases began to increase in California, Seton Medical Center worked with the State of California to respond to the need for hospital capacity and was designated a COVID-19 Treatment Center. In order to prepare for the potential influx of patients requiring care, Seton had to quickly expand their critical care capacity and inventory of necessary medical supplies and equipment. MedShare partnered with them to provide thousands of surgical masks as well as exam tables, crash carts, and other equipment to Seton to help them prepare to care for patients from across the San Francisco Bay Area.

# Global COVID-19 Support

## Preston-Werner Foundation Partnership

MedShare and the Preston-Werner Foundation partnered to support the need for health care supplies in developing countries during the COVID-19 outbreak. MedShare provided more than 500,000 units of PPE and other critical supplies to seven existing Preston-Werner Foundation partners. Supplies were sent to Muso in Mali, Integrate Health in Togo, Last Mile Health in Liberia, VillageReach in Malawi, Pivot in Madagascar, Lwala Community Alliance in Kenya, and Partners in Health in Lesotho.



**“Despite our efforts to procure PPE, this is the first international shipment we’ve managed to receive. It’s a huge relief to our teams as concerns about PPE running out have been one of the greatest anxieties. Now that COVID-19 is picking up steam in Madagascar in a very real way, the timing couldn’t have been better.”**

- Alexis Moisand, PIVOT HR & Finance Officer

**“Now that we received better PPE, including more appropriate masks, gloves, and face shields, I feel well equipped and better protected when I go around the community for my home visits. I am more confident in my work helping my community.”**

- Afi KPABA, Community Health Worker, Integrate Health



# Infectious Disease Control & Prevention Program

## Serving the Clarkston, Georgia Community

When the COVID-19 pandemic arrived in the U.S., Ethne Clinic began to see instances of positive tests amongst patients in their clinic. Recognizing that their patients in the Clarkston community typically live in close quarters in multi-generational households, which potentially increases the risk for exposure, Ethne decided to organize a free testing event for their community.

Ethne was able to procure testing kits, and with PPE and other supplies provided by MedShare and several other organizations, they held a two-day free testing event in Clarkston, where they administered 162 tests. What they found is that the prevalence of COVID-19 in the communities they serve was significantly higher than in the county overall.

Since that first event, they've offered testing daily in their clinic and have tested more than 2,500 residents of Clarkston. When one of Ethne's long-time patients noticed that her daughter was ill, she encouraged her to get tested. In addition to providing the initial testing, Ethne monitored her through the course of her infection to recovery. Throughout the journey, Ethne was able to help her manage her chronic illnesses and also provide social support for the whole family.

By working closely with the community, Ethne has been able to build greater awareness for the risks of COVID-19 and encourage safe practices to prevent the spread. In spite of the many challenges that have resulted from COVID-19, organizations came together to work with Ethne and help to support the needs of the community.







“Because of MedShare’s timely and consistent donation of PPE to our clinics, we are able to continue to keep our staff safe as we provide COVID-19 testing and keep our doors open to provide medical care to the community.”

- Esther Kim, Ethne Clinic

**48**  
countries  
served

**\$2.6M**  
in aid  
donated

**224k**  
patients served

# Biomedical Equipment Training & Repair Service



## Training in Nigeria

Biomedical equipment is an integral component of health care providers' capability to diagnose, prevent, monitor, and treat diseases and injuries. And yet, for many developing countries, basic biomedical equipment is cost prohibitive, and even when a hospital has the equipment, it can be difficult to access the parts needed to make necessary repairs. Further complicating the situation, technicians often lack the training to repair the highly-specialized equipment.

MedShare repairs and calibrates every piece of biomedical equipment that we provide to health organizations to ensure that it is fully functional and ready to be put to use upon arrival. We go a step further by offering in-depth, hands-on training on how to operate and maintain the equipment and continue to serve as a resource after equipment has been placed to make sure that organizations are able to maximize use of their equipment to improve health outcomes in the communities they serve.

**3**  
countries  
served

**550**  
end-users  
trained

**4.5k**  
pieces of biomedical  
equipment sent



**"I'm so fortunate to be the first mother to deliver on this modern delivery bed in Federal Medical Center Owerri... I hope to use it again in my next delivery."**

- Grace Ogbonnaya, mother of newborn delivered at FMC Owerri in Nigeria

# Financial Statements

MedShare International, Inc. Summary Statement of Activities for the Year Ended June 30, 2020

	Without Donor Restrictions	With Donor Restrictions	Total
<b>Revenue &amp; Support</b>			
Grants and contributions	\$ 4,693,471	\$ -	\$ 4,693,471
Contributions for specific projects	-	2,461,319	2,461,319
Special events, net	394,506	-	394,506
In-kind contributions			
Equipment and supplies	15,400,762	-	15,400,762
Professional services	3,579	-	3,579
Earnings on investments, net	-	5,079	5,079
Other income	9,323	-	9,323
Net assets released from restrictions	1,901,790	(1,901,790)	-
<b>Total revenue and support</b>	<b>22,403,431</b>	<b>564,608</b>	<b>22,968,039</b>
<b>Expenses</b>			
Program expenses	20,766,629	-	20,766,629
Fundraising expenses	1,068,613	-	1,068,613
Management and general expenses	715,483	-	715,483
<b>Total expenses</b>	<b>22,550,725</b>	<b>-</b>	<b>22,550,725</b>
<b>Increase (decrease) in net assets</b>	<b>(147,294)</b>	<b>564,608</b>	<b>417,314</b>
<b>Net assets, beginning of year</b>	<b>19,316,800</b>	<b>3,018,560</b>	<b>22,335,360</b>
<b>Net assets, end of year</b>	<b>\$ 19,169,506</b>	<b>\$ 3,583,168</b>	<b>\$ 22,752,674</b>

## Summary Balance Sheet

### Assets

Cash and cash equivalents	3,843,682
Receivables	912,968
Inventory	15,865,888
Other assets	210,265
Property and equipment (net)	1,640,666
Endowment	1,183,346
<b>Total assets</b>	<b>23,656,815</b>

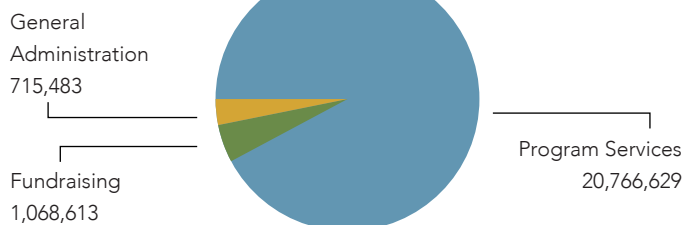
### Liabilities & Net Assets

Accounts payable and accrued expenses	350,291
Deferred revenue - PPP grant	553,850
Without donor restrictions	19,169,506
With donor restrictions	3,583,168
<b>Total liabilities and net assets</b>	<b>23,656,815</b>

## Revenue & Support



## Operating Expenses



# Board of Trustees:

## *Fiscal Year 2021*

**Keith Winn, Chair**

**Angeline Fife, Past Chair**

PDSI

**David Kochman, Vice Chair**

Henry Schein, Inc.

**Tom Hawk III, Secretary**

King & Spalding LLP

**Dana H. Halberg, CFA, Treasurer**

**Thomas Asher**

The Rich Foundation, Inc.

**Ibraheem T. Badejo, PhD**

Johnson & Johnson Innovation Center

**Kathleen Barksdale**

The Rockdale Foundation

**Josh Covett**

Movement Mortgage

**Evan Glover**

NCR

**Ira Horowitz, MD**

Emory University School of Medicine

**Kassy Kebede**

Cepheus Growth Capital Partners

**Pat Salber, MD, MBA**

The Doctor Weighs In

**Maryjane Stevens**

Retired Financial Executive

**Mike Tuck**

Owens & Minor Halyard Products Division

**Sandy Tytel**

Sandra and Howard Tytel Family Charitable Foundation

### Emeritus Trustees

**A.B. Short**

MedShare Co-Founder

### MedShare CEO & President

**Charles Redding**



# Regional Council Members:

## Fiscal Year 2021

### Southeast Regional Council

**Adam Butler, Co-Chair**  
CBRE

**Robin Chalmers, OD, Co-Chair**  
Clinical Trial Consultant

**David Apple, MD**  
Shepherd Center

**Spring Asher**

**Angèle Hawkins Barrow**  
New Hope Enterprises

**Carl C. Capelouto, MD**  
Georgia Urology, PA

**Holly Covett**  
Movement Mortgage

**Josh Covett**  
Movement Mortgage

**Kurt Ehlers**  
Ellinwood + Machado, LLC

**Chadd Evans**  
Altera

**Heather Fenton**  
NewPowerPAC

**Natalie Giurato**  
Cox Enterprises

**Carla Haack, MD, FACS**  
Emory University Hospital

**Tom Hawk III**  
King & Spalding LLP

**Sheila Hickson-Curran**  
Johnson & Johnson Vision

**Shaneeta M. Johnson, MD**  
Morehouse School of Medicine

**Adam Kessler**  
Iberia Bank Commercial Banking

**Becca Krumdieck**  
Northside Hospital

**Craig Logan, MD**  
The Southeast Permanente  
Medical Group

**Brandon Mark**  
OXOS Medical

**Alawode Oladele, MD**  
G.I.A.N.T. Non Profit

**Jill S. Paris, CPA**  
Jill S. Paris, LLC

**Tim Smith**  
Northwestern Mutual

**Jeff Solomon**  
Kaila & Solomon Law Group

**Michael Sunshine**  
BAMM Real Estate LLC

**Brian I. Wellington, PhD, PE**  
NewFields

**Kristen McDermott Woodrum**  
BakerHostetler

### Northeast Regional Council

**Sandy Tytel, Chair**  
Sandra and Howard Tytel Family  
Charitable Foundation

**Japhet Aryiku**

**Deborah DeVerna**  
Fundtech

**Donna Drummond**  
Northwell Health

**John Feerick**

**Jennifer Kim Field**  
Henry Schein Inc.

**Michael R. Irwin**  
Citigroup Global Markets Inc.

**Cliff Katus, MD**

**Ginny Knott**

**Laureen S. Knutsen**

**Anita MacDougall**  
Consultant

**Phyllis McCready**  
Northwell Health

**Irwin Merkatz, MD**  
Albert Einstein College of Medicine

**Donna K. Raggio, MD**

**Jacqueline Wasp**

**Colonel J. Craig White**

### Western Regional Council

**Patricia Salber, MD, MBA, Chair**  
The Doctor Weighs In

**Uday Ayyagari**  
Ikaso Consulting, LLC

**Lorenzo Benedicty**  
Kaiser Permanente

**Shantanu Bhalerou**  
Cypress Semiconductor

**Chris Chan**  
Chan Investments

**Asok Chatterjee**  
Telecommunications (Retired)

**Doug Grey, MD**  
Kaiser Permanente (Retired)

**Paul B. Hofmann, DrPH**  
Hofmann Healthcare Group

**Ara Martin**  
A5 Advisors, LLC

**Zach Miller**  
Deloitte Consulting Los Angeles

**Ann O'Brien**  
Kaiser Permanente Washington

**Andrew Pines**  
Public Health Institute

**Florence Raskin**  
Healthcare Administration (Retired)

**Bill Schechter, MD**  
University of California, San  
Francisco (Retired)

**James Schmitz**  
NBS Technical Services, LLC

**Patrice Shepherd, MBA**  
Sutter Health (Retired)

**Paul David Shrader**  
Ring

**Susan Sprunk**  
Point of View Marketing

**Serena Zhou**  
Google

# Volunteer Impact:

30+ Hours

Volunteers are valued members of the MedShare family. The time, energy, and skill that they contribute make it possible for us to sort and prepare large quantities of surplus medical supplies in order to get them to where they are needed the most. Even with the impact of the COVID-19 pandemic, more than 16,000 volunteers gave their time to MedShare through individual and group service in 2020.

## Southeast Region

- Shahid Al-Raqib
- Caroline Atherton
- Kailey Balconi
- Patrick Barlow
- Catherine Brown
- Marian Burge
- Beth Caldwell
- Robin Chalmers
- Diane Cortese
- Rob Dandridge
- Bianca Eze
- Samantha Finkelstein
- Angela Galanter
- Adalyn Galanter
- David Gates
- Jane Gole
- Ken Greenwood
- Ravyn Hardwick
- Arthur Hayes
- David Hendricks
- Jack Horvath
- Pat Horvath
- Patricia Hunter
- Ketteria Ingram
- Charlie Jones
- Bryson Jones
- Takia Jones
- Spencer Jones
- Jack Kaufman
- Shelby King
- Pearl Lark
- Yuna Lee
- Anya Mancinelli
- Long Nguyen
- Jack Nolen
- Gigi Obregon
- Brenda Pearson-Alexander



- Huynh Phan
- Tim Ralston
- Brian Reed
- Shari Robinson
- Rock Rock
- Connie Rose
- Joyce Russell
- Carla Schissel
- Mariama Sheriff
- Hettie Smith
- Julie Vanhout
- Bill Vanhout
- Cy Wang
- Bernice Williams
- Janice Yermack





Nassim Nouri  
 Serey Tith Leaksmev Nouth  
 Serey Chan Leakna Nouth  
 Jeannette Parker  
 Barry Penner  
 Mary Petrofsky  
 Matthew Rodriguez  
 Diana Rosas  
 Jinny Rudd  
 Gloria Ruiz  
 Kay Ruocco  
 Arleen Sakamoto  
 Nathan Salcedo-Fernandez  
 Sandy Salerno  
 Joseph Si  
 Emma So  
 Carol Stewart  
 Bonnie Swyers  
 Hailey Tenorio  
 Helen Vajk  
 Jane Valley  
 Kyle Pai Hsuan Wang  
 Caren Watson  
 Regina Wegener  
 Beth Williams  
 Maria Williams  
 Norma Williams

**Northeast Region**

Michael Chung  
 Chris Hughes  
 Mychal Javan  
 Ethan Ojeda  
 Tyler Ojeda  
 Karl Sales  
 Brandon Santos  
 Fatima Sindhu  
 Freddie Sufian

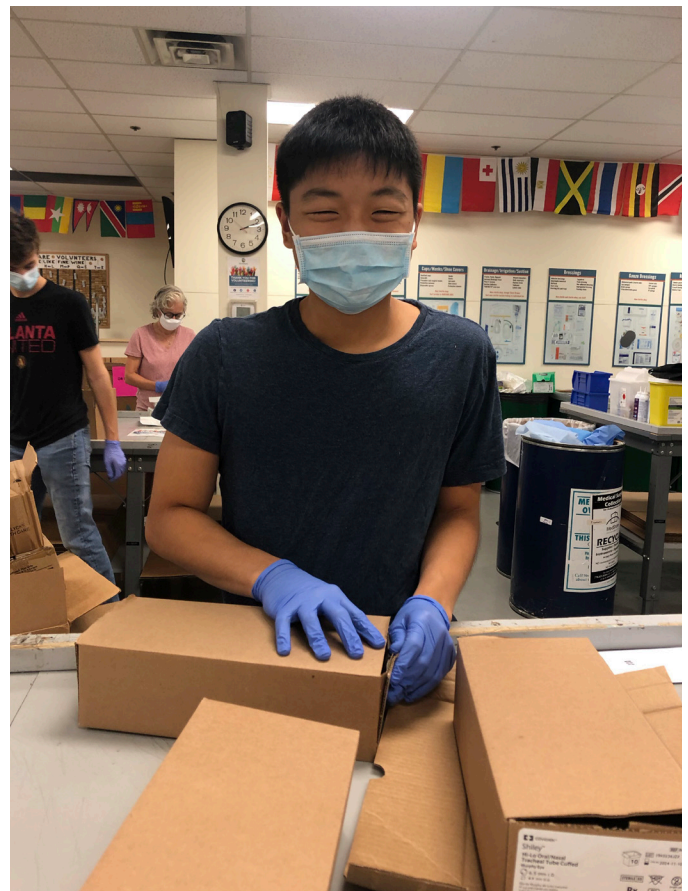
Karen Difrummolo  
 Samantha Duenas  
 Susan Dyer  
 Cynthia Ellis  
 Audrey Ewart  
 Marsha Felton  
 Philip Fischbacher  
 Karen Fung  
 Barbara Gasparian  
 Mary Lou Groff  
 Maureen Hall  
 JoAnna Hansen-Morton

Alicia Moore  
 Kelsey Moore  
 Lynn Moreau  
 John Morton  
 Dottie Moura  
 Alana Musante  
 Kris Nill-Snow  
 Marsha Nishikawa

**Western Region**

Lya Ackermann  
 Lynne Allen  
 Rene Amar  
 Cynthia Anderson  
 Mark Anderson  
 Mary Asturias  
 Jeanne Ballard  
 Flora Bartolome  
 Sharn Basi  
 William Bautista  
 Maurice Baz  
 Suseela Bikkina  
 Barbara Boylan  
 Brian Briseno  
 Sharon Brown  
 Gail Carter  
 Howard Celnik  
 Desmond Chee  
 Jenny Choi  
 Rissa Coplan  
 Kathleen Dawson  
 Oliver Diamond  
 Camille Didas

Camille Harris  
 Mary Haupt  
 Susanna Ho  
 Kathy Lynn Ho  
 Fred Honsal  
 Kristine Houglet  
 Gloria Jancoski  
 Nancy Jee  
 Fran Jurcso  
 Savoy Key  
 John Kitts  
 Steve Kochly  
 Po Yin Kwok  
 Karen Lee  
 Charlotte Levy  
 Andy Ling  
 Kay Low  
 Kevin Lu  
 Nancy Lum  
 Mike Lundeen  
 Dave Mantooth  
 Dolores Martinez  
 Nancy Menne  
 Rabemah Momanyi  
 Jane Montgomery





# Financial Donors

## Legacy Society

*Gifts made through estate planning*

Lorenzo Benedicty  
 Lewis and Faye Manderson  
 Ms. Leda Rapp  
 Mr. and Mrs. Glen A. Reed  
 Raymond and Marilyn Ruddy  
 Dr. Benjamin V. Siegel

## Founder's Society

*Lifetime cumulative giving of \$1,000,000 +*

Coca-Cola Nigeria Equatorial Alpha House  
 The Kendeda Fund  
 Kimberly-Clark Foundation  
 Ministry of Health of Ethiopia  
 Sutter Health  
 The Coca-Cola Africa Foundation  
 The UPS Foundation

## Chairman's Circle

*\$100,000 +*

Blue Shield of California  
 Callaway Golf  
 Celebrate International  
 Delta State Government Nigeria  
 Herbalife Nutrition Foundation  
 Kaiser Foundation Hospitals Inc  
 Henry E. Niles Foundation Inc  
 North Point Ministries/Buckhead Church  
 Sir Emeka Ofor Foundation  
 Philips  
 Preston-Werner Foundation  
 Samsung Semiconductor Inc  
 Skinnycorp LLC dba Threadless  
 Sutter Health  
 The Coca-Cola Foundation  
 The UPS Foundation  
 The Walt Disney Company

## President's Circle

*\$50,000 +*

Bishop Entertainment Consult LLC  
 J. Bulow Campbell Foundation  
 Richard A. Busemeyer Atheist Foundation Inc  
 John and Hazel Clendening Center of Hope Hospital LTD  
 CommonSpirit  
 The Grey Family Foundation  
 The Kendeda Fund  
 National Association of Investment Companies  
 NCR Foundation  
 O'Melveny & Myers LLP  
 Raymond and Marilyn Ruddy Charitable Fund  
 Luci and Stan Sunshine Family Foundation Inc  
 The Courts Foundation  
 The Rich Foundation Inc  
 United Methodist Committee on Relief (UMCOR)  
 Van Andel Charitable Fund  
 World Vision Canada

## Leader's Circle

*\$25,000 +*

AKT Investment Inc  
 Mark Anderson  
 athenahealth  
 Catholic Health Initiatives  
 Mike Dangerfield  
 The J. B. Fuqua Foundation  
 Global Medical Assistance Inc  
 Great Zimbabwe University  
 HEALTH + SOLVE LTD  
 Health Access Initiative Foundation  
 Jackson Healthcare LLC  
 Johnson & Johnson  
 K-Town Association of Atlanta Inc  
 Dr. Berhanu E. Keneda



Ragnar and Laureen Knutsen  
 Mimosa Mining Company  
 Sue Montgomery  
 Northwell Health  
 Stillwater Foundation  
 The KW Revocable Trust  
 The Ludacris Foundation  
 The Rockdale Foundation  
 Turner Broadcasting System  
 Sandra and Howard Tytel  
 Women's Tennis Association

## Guardian's Circle

*\$10,000 +*

Alameda County Waste Management Authority  
 Salaheldin Abusin  
 Thomas and Spring Asher  
 Matthew Ausman  
 Baccash Family Foundation Inc  
 Dr. Ibrahim T. Badejo  
 Bancker-Williams Foundation  
 The George & Dorothy Babare Family Foundation  
 Nancy Barrow

John W. Bloom  
 The Mary Allen Lindsey Branan Foundation  
 Cascade Foundation  
 Chevron  
 Cisco  
 Josh and Holly Covett  
 Crane Foundation Inc  
 CURE International  
 Emory Healthcare  
 Heather Fenton and Richard Ossoff  
 Angeline Fife  
 Fifth Avenue of Long Island Realty Associates  
 Food for the Poor Inc  
 Georgia Baptist Health Care Ministry Foundation  
 Georgia Institute of Technology  
 High Tide Foundation  
 HRH Foundation  
 The Imlay Foundation Inc  
 Michael and Debbie Irwin  
 JEC Foundation  
 The Jef Jel Project  
 The Jhong Family Charitable Fund  
 The Kebede Family Foundation

King & Spalding LLP  
 Ken Kpobari Miami  
 Wendy Lazar  
 Irving G. Leon  
 Melanie Loo  
 Walter E. Miller  
 Movement Foundation Inc  
 Mr. and Mrs. John R. O'Brien  
 Pela  
 Pittulloch Foundation  
 The Progress Family Foundation Inc  
 Reed Family Foundation  
 Dr. Patricia Salber and Dr. Dov  
 Michaeli  
 Henry Schein Inc  
 Susan Sprunk  
 Ram Sundaram  
 The Sweetgrass Foundation  
 Tolleson Family Foundation  
 UCSF Medical Center  
 Keith and Linda Winn

**Advocate's Circle**

\$5,000 +

Alan and Faye Adler  
 AMB Foundation  
 APG Consultancy LTD  
 Ashner Family Evergreen Foundation  
 Baker Hostetler LLP  
 Lydia Bishop  
 Peter C. Block  
 BounceX  
 Mary Bruder  
 Jonathan Byrum  
 Dr. Carl Capelouto  
 Fabrice Chouquet  
 Clif Bar Family Foundation  
 Debley Foundation  
 Delta Airlines Caring Crew  
 Charles and Renee Evans  
 Demian Fitzgerald  
 John and Mary Franklin Foundation  
 Future Sports Asia Ltd  
 Sameer Gandhi  
 Amanuel Gobena  
 Ashley Gravelee  
 Dr. Carla Haack  
 William Hardy  
 Frederick Hessler and Kathleen  
 Mundy Trust  
 Dr. Ira Horowitz  
 John Horvath  
 J. Stephen Hufford Family  
 Foundation  
 Iberia Bank  
 Joseph C. Inman

Lee Ann & Melvin H. Jacobs  
 Foundation  
 Susan Karp  
 Drs. Clifford and Eli Katus  
 Kassy Kebede  
 Adam and Christie Kessler  
 The Thomas M. and Irene B. Kirbo  
 Charitable Foundation  
 Wendy Lazar  
 Boon Khim Liew  
 Michael R. Linburn  
 Monica Lopez  
 Lord's Grace Christian Church  
 Mobility Worldwide  
 OSIssoft LLC  
 Zachary Pandhl  
 Henry Paul  
 Presidio Network Solutions Inc  
 Clay Price  
 Sage Foundation  
 Jim Sawyer and Preetam Printz  
 Schechter Foundation Inc  
 Southeastern Council of Foundations  
 Staples  
 John Stienstra  
 Michael and Maya Sunshine  
 Terra Family Foundation  
 Dr. Samuel Test  
 The Stewart Family Charitable Fund  
 Bruce W. Thomas  
 Tiny Hills Inc  
 Tito's Handmade Vodka  
 Anne E. Tolleson  
 Chaoming Tseng  
 Robert Verola  
 Edna Wardlaw Charitable Trust

Gertrude and William C. Wardlaw  
 Fund  
 Jackie and Warren Wasp  
 Krubwa Foemi Yves

**Sustainer's Circle**

\$1,000 +

The Alimanestianu-Maca Family  
 Fund  
 Sam and Angie Allen  
 Eric Amdursky  
 American Endowment Foundation  
 American Fundraising Foundation  
 Nima Amini  
 Dr. William A. Ankobiah  
 AORN of San Francisco Bay Area  
 Aura Aparicio  
 Dr. David F. Apple Jr  
 Armanino Foundation  
 Japhet Aryiku  
 Samuel Ashknaz  
 Stephanie Atli  
 Larry Auerback  
 Ayah Foundation  
 Uday Ayyagari  
 Michael Babic Lamin & Kadie  
 Bah Foundation Inc  
 Marcia Bansley  
 Douglas Beck  
 Beech Foundation Inc  
 Gustavo Benedicty  
 Kurt Berney  
 Morey Bernstein Foundation  
 Shantanu Bhalerao  
 Lydia Bishop

Boston Scientific Corporation  
 Mendal Bouknight and Debbie  
 LePage  
 Candler Broom  
 Zach Broome  
 Kristin Brown  
 Adam Butler  
 Ed Cahill Fine Art -Frameworks  
 Gallery  
 Michael Carrington  
 Larry J. Carter  
 CBRE  
 Leila Chaouki-Juneau  
 John Chang  
 ChemTreat  
 Fei Chen  
 Kijoo Choi  
 Luis Chung  
 Citrix Systems Inc  
 Whitney Cline-Mebane  
 Cherida Collins Smith  
 Pat Covelli Foundation  
 Cliff Cranford  
 Elizabeth Daly-Dejoy  
 J.W. Daniel  
 Philip Davis  
 Negash Debel  
 Irene Devine  
 Heather De Valois-Green  
 Brian Dietz  
 Ruth Dinowitz  
 Jay Douglas  
 Howard E. Downing  
 Donna Drummond  
 Michael Dunitz Crisis Foundation Inc  
 Brian Dunne  
 Epiphany Lutheran Church  
 Leo Faddis  
 Faith Lutheran Church of Castro  
 Valley  
 Cristina Farrut  
 Atty. John D. Feerick  
 Marsha D. Felton  
 John Fenchuck  
 Sheldon Finkel  
 Leonard Fisher  
 Robert First  
 Meg Fitzpatrick  
 Joseph Foltz  
 Rutledge Forney  
 Hans Frabel  
 Deborah Frank  
 Rosemary Frederick  
 Susan Freeman  
 Amelia and Tom Gambino  
 Ke Geng  
 Georgia Health Foundation



David P. Giannini  
 Natalie Giurato  
 Global Leadership Initiative  
 Evan Glover  
 Joel Gossner  
 Ryan Graham  
 Dwight Grant  
 Dennis Green  
 Hans E. Hanson  
 Brooke Hardy  
 Lynn T. Haremski  
 Tom D. Harper  
 Anne Hathaway  
 Tom Hawk III  
 David Hirsch  
 Dr. Paul B. Hofmann  
 Jason B. Holden  
 Dr. Ira Horowitz  
 Guadalupe Ibarra  
 Ibesikpo Asutan Organization Inc  
 Frederick V. Iffert  
 Susan Igdaloff  
 IHRC  
 Greg Jacob  
 Sisay Jambolla  
 Anisa T. Kaicker  
 Stella Kamalu  
 Al Kao  
 John Kappos  
 Susan Karches  
 Katherine Kaufman  
 Ann Kay  
 Pat Kennedy  
 Adam Kessler  
 Carl E. Kessler Family Foundation  
 Erik Knutsen  
 Bette Kobzeff  
 Korean United Methodist Church  
 Alvin Lam  
 The Robert H. and Anita Q. Lawe  
 Foundation  
 John Lucas  
 Cala Luna  
 Dr. Steven N. Luxenberg  
 Anita and Richard MacDougall  
 Larry & Millie Magid Family  
 Foundation  
 MagMutual Insurance Company  
 Venencia Magnusen  
 Howell Mahoe  
 Dave Mantooth  
 Jessica Margrill  
 Marin Community Foundation  
 Ara Martin  
 The Maas Family Trust  
 Mattlin Foundation  
 Maurie and Eve



Gay Mayer  
 Mary Mayo  
 Kristen McDermott Woodrum  
 Josh McFarland  
 Peter H. McHale  
 Russell Medford and Dr. Margaret  
 Offermann  
 Joanne Miller  
 Mills Family Foundation  
 Todd Mills  
 Richard C. Mitchell  
 Jim Morrison  
 Baron Mullis  
 National Christian Foundation  
 Iruka Ndubuizu  
 Befekadu B. Negere  
 Mark E. Nevins  
 Dan Nguyen  
 Mark R. Nickel  
 Night Shift Merchandise  
 Thrive  
 Pete Ogilvie  
 Overcoming Ministries Inc  
 J. Garret Overlook  
 John Owen  
 Zachary Pandl  
 Will Pao  
 Nancy Paris  
 Paul and Jill Paris  
 Angus Parker  
 Genie Parker

Helen Perry  
 Kyle Peter  
 The Peterson Family Foundation  
 Phi Gamma Delta  
 Andy and Catherine Pines  
 Gary Pinsky  
 Matthew E. Pohlmann  
 Matthew Porter  
 Premier Healthcare  
 Brandon Rainbolt  
 Vijay Ramchandran  
 Amy V. Rast  
 Charles and Vele Keyata Redding

Paul W. Renaud  
 Renaissance Charitable Foundation  
 Carl Roberts  
 Jeffrey Robertson  
 Patricia Robinson  
 Robert Rosenthal  
 Steven Roser  
 Nathan Rushin  
 Saint Barnabas Corporation  
 Salesforce.org  
 Savannah Distributing Company Inc  
 Benjamin & Sophie Scher  
 Charitable Foundation



Pat F. Shepherd  
 Paul David Schrader  
 Myles W. Schumer and Anne F. Riney  
 Francine Segal  
 Dr. Diane Sklar  
 Deborah Smith  
 Smith & Howard PC  
 Richard Smithers  
 St. Brendan's Episcopal Church  
 Cries Advocacy  
 St. John the Baptist Catholic Church  
 Mark Stalzer  
 A.P. Staples  
 Karen Sullivan  
 Erin Sutcliffe  
 Shep Swindal  
 Synchro Functional Foods  
 TASC  
 TelecomPioneers  
 The Aprio Foundation Inc  
 The Field Fund  
 The First Presbyterian Church  
 The Sambol Family Foundation  
 The SAP Charitable Fund  
 The Sikand Foundation Inc  
 Ashley Thekkekara  
 Julie E. Tidwell

Mike and Tracy Tuck  
 Harold Underhill  
 Chris Van Asch  
 Francesca Verna  
 Frederick Villoutreix  
 Vitantonio Foundation  
 Paul Vos  
 VSP Marchon  
 Emmett Walker  
 Walker Wallace  
 Anthony Wang  
 Daniel Wang  
 Steve A. Weisbrod  
 Amy Williams  
 Philip Wirganowicz  
 Workday Foundation  
 Joyce Yu  
 Guta Yadeta  
 Liyuan Yao  
 Asfaw Yebu



# In-Kind Donors

2 A Good Cause, Inc.  
 A & R Electronics  
 Aberdeen Place Hospice  
 Acelleron  
 ACWC  
 Advance Urology  
 Advocates for World Health  
 Airlink  
 Agiliti Health  
 AK Medical  
 Alamada County HI-ICO  
 Alameda Hospital  
 Alegis Care  
 Alexander's Mobility Services  
 All Food and Candy  
 Alta Bates Summit Medical Center  
 Amazon.com  
 American Cancer Society  
 Ampath  
 Ample Scientific, LLC  
 Arena Family Dentist  
 ASP Global  
 AT&T Southside Pioneers  
 Atlanta Heart Specialists  
 Atlanta Medical Center  
 Atlanta Skin Cancer Center

Bay Valley Medical Group  
 BD - Bard Urological  
 Beauty Supply Inc.  
 Behind the Mask  
 Bensimon Center  
 Berkeley Public Health Clinic  
 Berkely Free Clinic  
 BlueShield of California  
 Boron Medical Inc.  
 Boston Scientific  
 Calmoseptine, Inc.  
 Cancer Treatment Centers of  
 America  
 Cartersville Medical Center  
 Castro Valley Pediatrics  
 Center for Endometriosis  
 Center of Hope Hospitals LTD  
 Chadron Community Hospital  
 Childrens Healthcare of Atlanta  
 City of Bellingham  
 City of San Leandro  
 Clara's House  
 Clarkston Community Health Center  
 Community Hospital of Monterey  
 Coram Specialty Infusion Services  
 Coweta Samaritan Clinic

Craig Hospital  
 Crutches 4 Kids  
 CUACE  
 CURE International  
 D&H Medical Supply  
 DePuy Synthes  
 Diagnostic Radiology  
 Dignity Health  
 Distribution Cooperative Inc  
 DOCHS - O'Connor Hospital  
 Donna DiCenzo  
 Dougherty Valley High School  
 Dr. Arnold G. Werschky  
 Dr. Carl Cricio MD  
 Dr. Charles S. Hill  
 Dr. Claire Kimmel  
 Dr. Daryl Boffard  
 Dr. Debra Rosenzweig  
 Dr. Frances Dickinson McMullan  
 Dr. Henri Brown  
 Dr. Herman Donatelli  
 Dr. James C. Yee  
 Dr. Kathryn Wagner  
 Dr. Martin Klahr  
 Dr. Michael Betsy  
 Dr. Rachel West  
 Dr. Raj Pal  
 Dr. Raymond K Chan  
 Dr. Richard Livernois  
 Dr. Steven Yeh  
 Eastside Spine & Injury  
 El Camino Hospital  
 Electronic Arts  
 Embddied Psychotherapy  
 Emory Healthcare  
 Encompass Group  
 Ethne Health  
 Ethnic Health Institute  
 Eveready First Aid  
 Evo Innovations  
 FIGSFiji Med-Aid  
 Flexport International LLC  
 Golden Gate Urology  
 Good Samaritan Health Center  
 Good Samaritan Hospital  
 Grady Health System

GRAIL, Inc.  
 Green Gear Supply Company  
 Gynecology Obstetrics  
 Halyard Health  
 HCA Healthcare  
 HealthTrust  
 Heart to Heart International  
 Henry Schein  
 Hill-Rom  
 Hills Eye Clinic  
 Hope Clinic Vaccine Center  
 Hospital for Special Surgery  
 Ichan School of Medicine Mt. Sinai  
 IMT Associates  
 Inogen Inc.  
 Intown Family Practice & Sports Med  
 Iron Mountain  
 Ivy Rehabilitation  
 Johnson & Johnson  
 Kaiser Permanente  
 KCI USA Inc.  
 Keck School of Medicine  
 Kimberly Clark  
 Laurel Fertility Care  
 Lawrenceville Surgery Center  
 ManaMed  
 Marin General Hospital  
 Marin Medical Equipment Recyclers  
 Marin Specialty Surgery Center  
 Marketlab, INC  
 Maternal Gynerations  
 Max Health Medical  
 McKesson  
 Medical Direct Club  
 Medline Industries Inc.  
 Memorial Sloan Kettering Cancer  
 Center  
 Menlo Park Surgical Hospital  
 Mercy Medical Center  
 Metro Vascular, PC  
 Mid Peninsula Urology Clinic  
 Midmark Corporation  
 Midwest Biologics  
 Mission Brain  
 Mobility Worlwide  
 Molnlycke Healthcare



Mount Vernon Premier Care LLC  
 National Home Health  
 Nebraska Heart Hospital  
 New England Fertility Institute  
 New Milford Area Rotary  
 New York Presbyterian Hospital  
 Non-Linear Systems  
 North Atlanta Orthopedic Surgery  
 Center  
 North Coast Medical  
 North Fulton Regional Medical  
 Center  
 Northpoint Washington  
 Northside Hospital  
 Northside Hospital Gwinnett  
 Northwell Health  
 NYNAPC  
 Operation Rainbow  
 Optim LLC  
 Order of Malta Clinic  
 Owens & Minor  
 Pain Institute  
 PCR Oncology  
 Peachtree Orthopedics  
 Peachtree Presbyterian Church  
 Pharmacy Cleanroom Supply  
 PharMerica Seattle Premier  
 Philips Healthcare  
 Piedmont Healthcare  
 Posh Pushers  
 Prepak Products  
 R Ventures Medical  
 Reno Sparks Tribal Health Center  
 Restoring Vision  
 Resurgens Orthopedics  
 Ridge Physical Therapy  
 RoadEX America Inc.  
 Rochester Medical Missions  
 Rodgers Dermatology  
 Roots Community Health Center  
 Rorbert Wood Johnson Barnabas  
 S-4 Technologies  
 San Francisco General Hospital  
 Savemart Pharmaceutical  
 Sean Alston Special Needs Trust  
 Serve Haiti  
 Share the Care Napa  
 Shepherd Center  
 Sima Medical & Cosmetic Clinic  
 Skyline College Surgical Tech Program  
 Southern Regional Medical Center  
 St. Francis Medical Center  
 St. Joes Home Health  
 St. Justin Church  
 St. Mary's Medical Center  
 St. Raymond Catholic Church  
 Standard Textile



Stanford  
 Stanford Health Care  
 Stanford Medical Center  
 Statue Cruises  
 Stryker Endoscopy  
 SummitStone Health Partners  
 Surplus Medical Supply  
 Sutter Health  
 Tanauan Leyte Assumption  
 Foundation  
 Texas Health Supply  
 Texas Institute for Surgery  
 The Clive Barnes Foundation  
 The Walt Disney Company  
 Therapeutic Dimensions  
 Tigers Logistics  
 Total Care Practice  
 Trans Alliance Med & Drugs  
 UCSF Health  
 United Ostomates of NJ  
 University of Vermont Medical  
 Center  
 UPS  
 Urology of Greater Atlanta  
 USC Surgical Skills Training  
 ValleyCare Health  
 Visalia Industrial Medicine  
 Walgreens



Washington Hospital Healthcare  
 WellStar Health System  
 Western Maryland Health System  
 Wilton Surgery Center  
 Wisemen Clinical  
 Woodland Dignity Clinic  
 World Medical Relief African Partners  
 World Vision  
 ZRG Medical





Em's Clinic provides essential health care for the Kibaale District community in Uganda.



**Get involved and donate at [www.medshare.org](http://www.medshare.org)**

**National Headquarters & Southeast Volunteer & Distribution Center**

3240 Clifton Springs Road  
Decatur, GA 30034  
770.323.5858

**Northeast Region Volunteer & Collection Center**

701 Penhorn Avenue, Unit #3  
P.O. Box 2075  
Secaucus, NJ 07096  
201.866.6090

**Western Region Volunteer & Distribution Center**

2937 Alvarado Street  
San Leandro, CA 94577  
510.567.7070



**@MedShareMission**



**@MedShareOfficial**



**@MedShare**